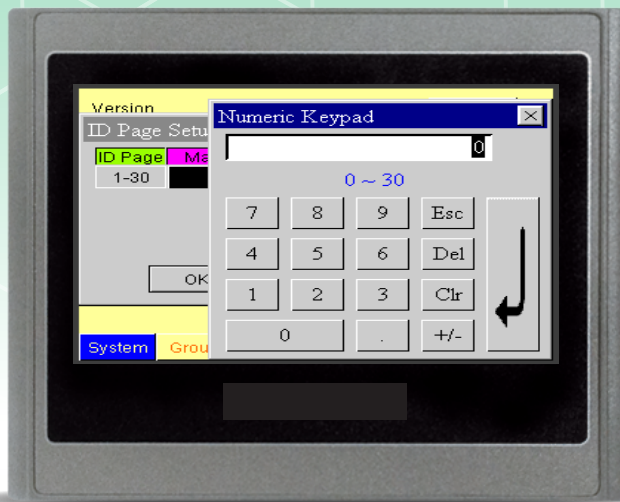


PK043-WST

Economy HMI Panels

Features

- 4.3" Wide Screen TFT LCD
- Suitable for simple & compact applications
- Slim, cost effective



Application:

Automatic Loader



CE FC

IP65 RoHS

| Model Name | | PK043-WST |
|-------------------------|-----------------------|--|
| Sub-Models | | 10 / 30 |
| Display | Size | 4.3" |
| | Max. Resolution | 480*272 |
| | Type | TFT LCD with LED Backlight |
| | Max. Colors | 16-bit |
| | Backlight Life | 20000hrs |
| | Display Contrast | 500:1 |
| | Luminance | 250 cd/m2 |
| Touch Panel | | 4-wire Analog Touch Panel |
| CPU | | RISC ARM9 32Bit |
| Backup SRAM | | 128KB |
| Working Memory | | 32MB |
| Built-in Storage Memory | | 8MB |
| Real-Time Clock (RTC) | | YES |
| Communication Interface | Micro SD Slot | N/A |
| | USB Client | YES (USB 2.0) |
| | USB Host | YES (USB 1.1) |
| | COM1 / COM3 | COM1: RS232/RS422/RS485, COM3: RS232 (optional: RS485) |
| | COM2 | N/A |
| | COM4 | N/A |
| | Ethernet | Sub-Model 30: YES |
| Front Function Keys | | N/A |
| Audio Out (optional) | | N/A |
| Video In (optional) | | N/A |
| Front USB Host Port | | N/A |
| Power | Input | 24VDC±10% Isolated |
| | Consumption | 10W |
| Environment | Operating Temperature | 0°C~50°C |
| | Relative Humidity | 10%~90% |
| | Shock (operation) | 10 ~ 55Hz (X,Y,Z direction, 1G, 30 Mins shock testing) |
| | EMI | FCC Part 15 Class A |
| | CE | EN61000-6-2, EN61000-6-4 |
| | UL Certification | N/A |
| | Ingress Protection | IP65 |
| Cooling | | Natural Cooling |
| Dimension WxHxD | | 130.0 x 106.2 x 39.0mm |
| Cutout Dimension AxB | | 119.0 x 93.0mm |
| Net Weight | | 0.35kg |

www.cermate.com

Please verify specifications before quoting. This guide is intended for reference purposes only. All product specifications are subject to change without notice.

No part of this publication may be reproduced in any form or by any means, electronic, photocopying, recording or otherwise, without prior written permission of the publisher.

All brand and product names are trademarks or registered trademarks of their respective companies.

© Cermate Technologies Inc. 2015

Cermate

A professional HMI solution provider

MSA-R40-E00-C0101-V0100